

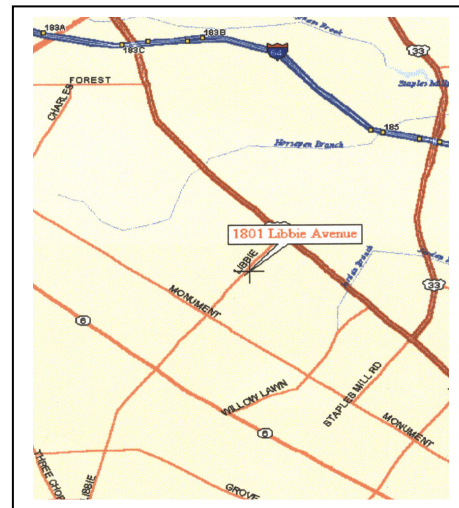
For Lease

1,526 SF
1st Floor - Office Space



1801 Libbie Avenue, Richmond, VA

- **1,526 S.F. – 1st Floor - Available**
- **Colonial Williamsburg Architecture**
- **Ample Safe Parking, beautifully Landscaped**
- **Space will be built out to suit tenants needs.**
- **Prime West End location, one block from St. Mary's Hospital on Monument Ave**
One block from Libbie Place on Broad Street
- **\$17.00 PSF - Full Service - Rental Rate**

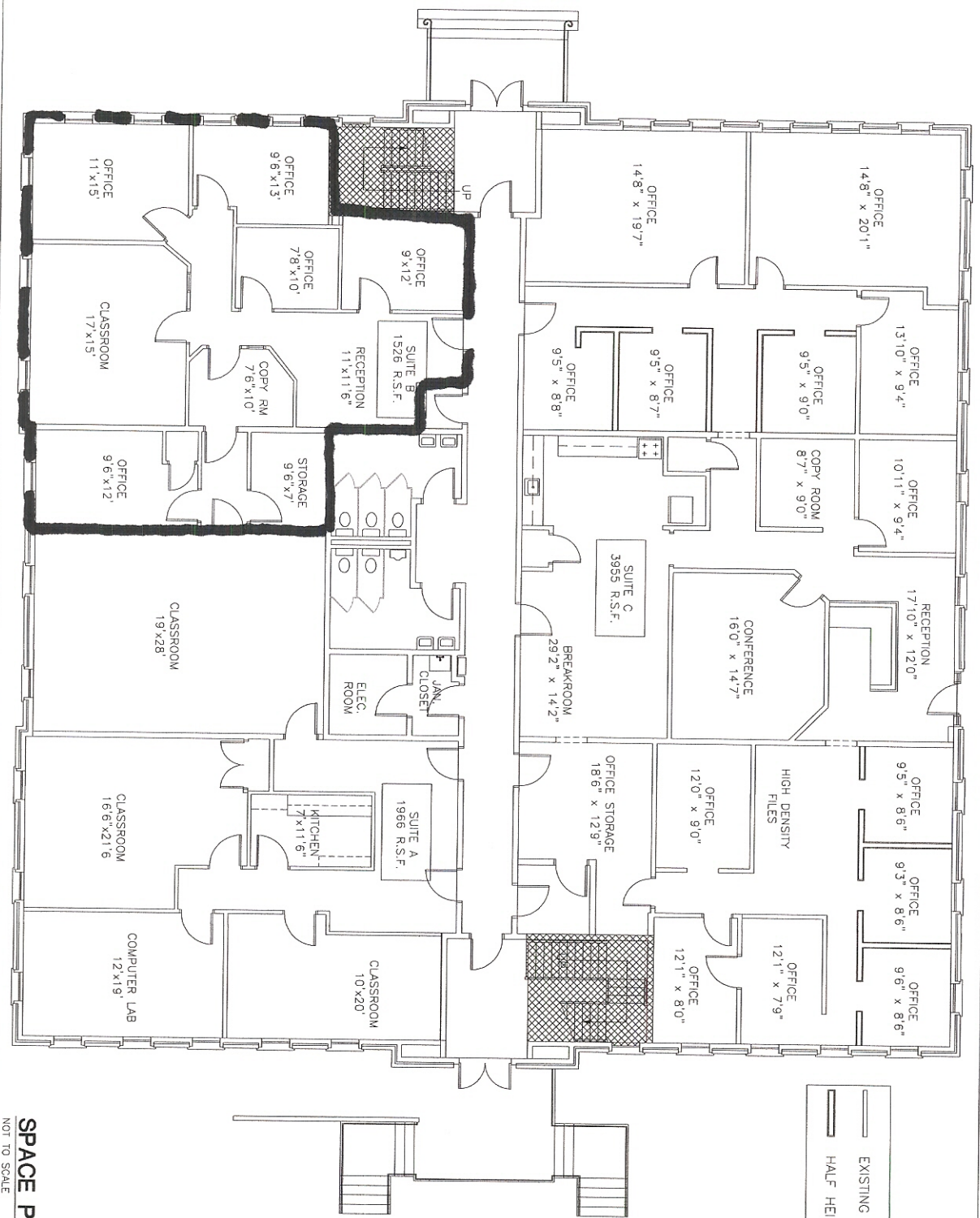


Floor Plan on back

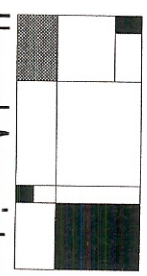


Ottley Properties, Inc.
PO Box 17901
26 Maxwell Road
Richmond, VA 23226
Fax: 804-562-4283

For More Information Contact:
Julian T. Ottley, CCIM
804-562-7373
julian@ottleyproperties.com



SPACE PLAN
NOT TO SCALE



Hummel Associates
ARCHITECTURE
SPACE PLANNING
INTERIOR DESIGN
223 North First Street, Richmond, VA 23219
(804) 578-7357 Fax (804) 643-7720

job number
07-043

LIBBIE SQUARE
1801 LIBBIE AVENUE
RICHMOND, VIRGINIA

FIRST FLOOR
Sheet Size
RECORD PLAN

drawn by
KT
CERT # NA
checked by
CHP
CERT # 0412-000216
(revision)

date
10 OCTOBER 2007
file name
1801_1st Fl_asbuilt.dwg

sheet number
1A1.1